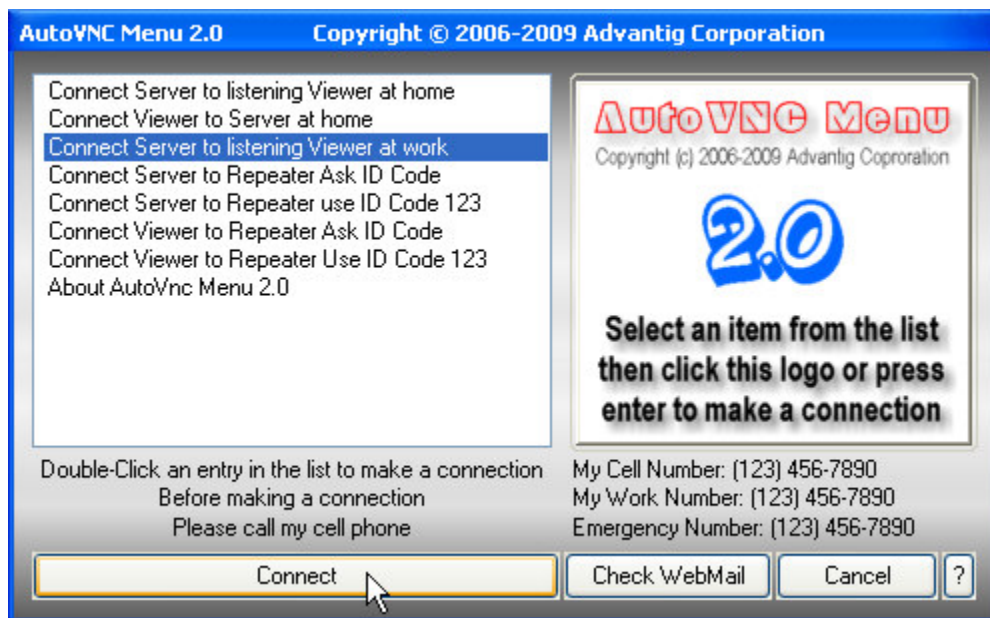


# AutoVNC Menu

Copyright © 2006-2009 Advantig Corporation

## Version 2.0



AutoVNC Menu (aVncMenu) is a small menu utility for virtual network computing (VNC) programs that lets you organize up to 100 reverse VNC connections into a simple to use graphical user interface (GUI).

It has been tested with UltraVNC, TightVNC and RealVNC. Other VNC programs may be compatible but have not been tested.

Compatible with Windows 7 / Vista / 2008 / 2003 / XP / 2000 / NT / ME / 98 / 95 Microsoft Windows operating systems.

# How to install AutoVNC Menu:

1 - Place the following files in the folder with your Winvnc.exe program.

**AvncMenu.exe**  
**AVncMenu.ini**  
AvncRun.bat  
Logo.bmp  
Background.bmp  
Enter.bmp

\*Bold text = Minimum required files

To start a Server the command line must contain the WinVNC.exe option as shown below and if not using the aVncRun.bat the WinVNC.exe program must be in the same folder with AvncMenu.exe.

**Winvnc.exe** -connect 123.456.789.0

*Note: If the AvncMenu.exe program is not located in the same folder with your Winvnc.exe program AvncRun.bat must be located in the folder with AvncMenu. Everything on the command line before winvnc.exe is removed.*

If you need to perform additional commands that can't be included on one command line you will need to include a batch file named AutoRun.bat and edit it to perform the additional commands.

## AvncRun.bat Example

---

```
@echo off
cls
C:
cd "\Program Files\UltraVNC"
start %1 %2 %3 %4 %5 %6 %7 %8 %9
if %ERRORLEVEL% NEQ 0 pause
exit
```

---

## 2 - Edit the aVncMenu.ini file.

[TITLEBARTEXT] – The text you want displayed on the title bar of the menu.

[CONNECTION] – The first line after the connection tag is the text that will be displayed on the selection menu. The second line is the command line used to instruct your VNC program to make a reverse connection. Refer to the documentation for your VNC program to determine the format of the command line. If the command line contains a blank ID code (-id or id:) the user will be asked to enter the ID code (*-id ID: for viewer command lines*). The examples shown are for the UltraVNC program. You can have up to 100 connection entries. The menu selections can be used to start a VNC Server, a VNC Viewer or both. (see page 8 for viewer command line requirements)

[TEXT1LEFT] – The first line of text displayed below the selection box

[TEXT2LEFT] – The second line of text displayed below the selection box

[TEXT3LEFT] – The third line of text displayed below the selection box

[TEXT1RIGHT] – The first line of text displayed below the logo on the right side above the URL and close buttons.

[TEXT2RIGHT] – The second line of text displayed below the logo on the right side above the URL and close buttons.

[TEXT3RIGHT] – The third line of text displayed below the logo on the right side above the URL and close buttons.

[CONNECTBUTTON1TEXT] – The text displayed on the logo button. (*not shown if using a logo*)

[CONNECTBUTTON2TEXT] – The text displayed on the connect button.

[CLOSEBUTTONTEXT] – The text displayed on the close button.

[ULRBUTTONTEXT] – The text displayed on the URL button.

[ULRCOMMAND] – The URL launched when the URL button is clicked.

[ENTERIDTEXT] – The text displayed on the Enter ID Code dialog.

[AUTOCONNECT] – Automatically connects to the first connection entry without waiting for the user to click a menu item.

[ASKIDCODE] – Only used if you specify the server -id: ### or the -autoreconnect ID:### command line parameter or the viewer -id ID:### command line parameter. The number (###) will be used to pre-populate the id code box as the default number. Leaving the number blank will perform the same function even if the [ASKIDCODE] tag is not specified but the ID code prompt will not be pre-populated.

## aVncMenu.ini Example

---

[TITLEBARTEXT]

AutoVNC Menu 2.0 Copyright (c) 2006-2009 Advantig Corporation

[CONNECTION]

Connect Server to listening Viewer

Winvnc.exe -autoreconnect -connect myaddress.com::5500

[CONNECTION]

Connect Server to Repeater and ask for the ID code

Winvnc.exe -autoreconnect id: -connect repeater.address.com::443

[CONNECTION]

Connect Viewer to Repeater and ask for the ID code

VNCviewer.exe -quickoption 3 -proxy my.address.com::443 -id ID:

[TEXT1LEFT]

Double-Click an entry in the list to make a connection

[TEXT2LEFT]

Before making a connection

[TEXT3LEFT]

Please call my cell phone

[TEXT1RIGHT]

My Cell Number: (123) 456-7890

[TEXT2RIGHT]

My Work Number: (123) 456-7890

[TEXT3RIGHT]

Emergency Number: (123) 456-7890

[URLBUTTONTEXT]

Check WebMail

[CONNECTBUTTON1TEXT]

Click here to connect

[CONNECTBUTTON2TEXT]

Connect

[URLCOMMAND]

<http://mail.yahoo.com>

[CLOSEBUTTONTEXT]

Cancel

[ENTERIDTEXT]

Enter Your ID Code

[AUTOCONNECT]

[ASKIDCODE]

---

## Adding a Custom Logo to the Connect Button:

You can add a custom bitmap (bmp) to the connect button by including Logo.bmp in same folder as the AvncMenu.exe file.

The bitmap should be 196 pixels wide by 181 pixels tall.

The bmp will be automatically cropped if it's too large.



If the Logo.bmp file is missing the default button shown below will be displayed.

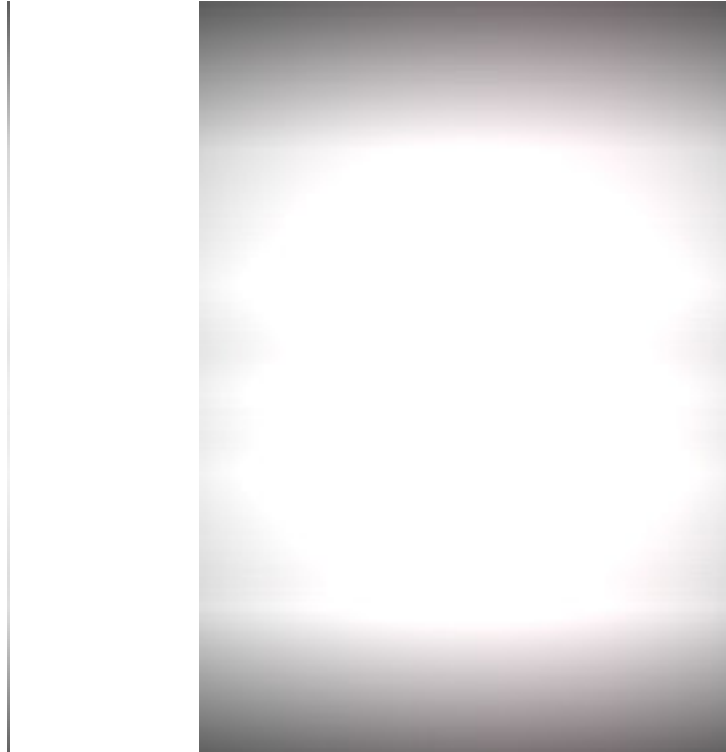


## **Adding a Custom Bitmap to the Selection Menu:**

You can add a custom bitmap (bmp) to the selection menu background by including background.bmp in same folder as the AvncMenu.exe file.

The bitmap should be 1 pixel wide by 283 pixels tall.

The bmp will be automatically resized or stretched to fit the background.



## **Adding a Custom Bitmap to the Enter ID Code Menu:**

You can add a custom bitmap (bmp) to the repeater ID menu background by including Enter.bmp in same folder as the AvncMenu.exe file.

The bitmap should be 235 pixels wide by 213 pixels tall.  
The color for transparency is RGB 247,255,255



## How to use AutoVNC Menu to start a VNC Viewer:

[CONNECTION] – The first line after the connection tag is the text that will be displayed on the selection menu. The second line is the command line used to instruct your VNC Viewer program to make a connection. Refer to the documentation for your VNC program to determine the format of the command line. If the command line contains a blank ID code (-id ID:) the user will be asked to enter the ID code for the Viewer connection. The examples shown are for the UltraVNC program. You can have up to 100 connection entries.

To start a Viewer instead of a server the command line must contain the VncViewer.exe option as shown below and if not using the aVncRun.bat the VncViewer.exe program must be in the same folder with AvncMenu.exe. Everything before vncviewer.exe is removed.

### Examples:

```
[CONNECTION]
Connect VNC Server to my listening VNC Viewer at home
Winvnc.exe -autoreconnect -connect 192.168.0.10::443
```

```
[CONNECTION]
Connect VNC Viewer to my repeater using ID 123
VNCviewer.exe -quickoption 3 -proxy my.address.com::443 -id ID:123
```

```
[CONNECTION]
Connect Viewer to my repeater and ask ID
VNCviewer.exe -dsmplugin MSRC4Plugin.dsm -quickoption 3 -proxy my.address.com::443 -id ID:
```

### AvncRun.bat Example for mixing Servers and Viewers

---

```
@echo off
cls
C:
cd "\Program Files\UltraVNC"
start %1 %2 %3 %4 %5 %6 %7 %8 %9
if %ERRORLEVEL% NEQ 0 pause
exit
```

Note: Viewers may be sensitive to extra spaces after the address, remove any extra characters.